

Requirements

- Users must have Interval Data Metering
- Users must obtain an **assigned** User ID and Password. If you don't have a password, [request one now](#).

Tips for First Time Users

- From 'Your Account', click on the link to access IDR Data Viewer.
- At **Lodestar Customer Choice Suite**, enter your **assigned** Username in the User ID field, and your **assigned** password in the Password field.
- Click on blue Login navigation button, indicated by red arrow below.



- Under LODESTAR on the left hand side of your screen click on **Entity Management**
- Then click on **Recorders**.

Example below –



- Click on [Search](#) at top of screen. This will take you to the **Interval Data** results screen which will list your available recorder ids.
- From the drop down arrow on **Scale Results to**, choose the interval time period you want to review by: Example below -

Scale Results to

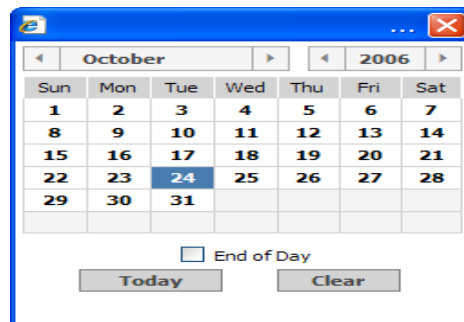
- Click in the **Maximum Values** and **Total Value fields** which will place a green check mark in these fields.

Example below -

Graph Maximum Values Total Value

- At **Show Data from** choose begin and end dates by clicking on the down arrows to the right of these fields and choosing the dates wanted by clicking on them in the Calendar.

Example below –



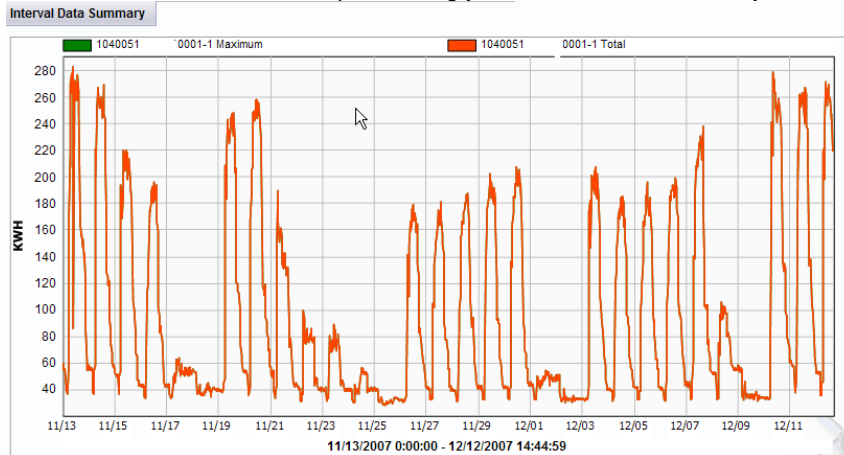
- Click in the **box** just left of the Recorder ID number that you are wishing to view data for.

Example below –

<input checked="" type="checkbox"/>	Recorder ID
<input checked="" type="checkbox"/>	1040051 0001

At this point you have options -

- Click on [Analysis Graph](#) in the top right hand corner of the screen. You have access to view a Graph showing your Interval Data Summary. Example below –



Or you can use the scroll bar on the right hand side of your screen to scroll down and view each

interval for the period you have chosen by clicking on the arrow next to the

Interval Data

option.

Example below –

11/13/2007 00:00:00	60.27	60.27
11/13/2007 00:15:00	57.3	57.3
11/13/2007 00:30:00	56.01	56.01
11/13/2007 00:45:00	57.21	57.21
11/13/2007 01:00:00	54.72	54.72
11/13/2007 01:15:00	55.26	55.26
11/13/2007 01:30:00	55.11	55.11
11/13/2007 01:45:00	55.41	55.41
11/13/2007 02:00:00	57.24	57.24
11/13/2007 02:15:00	54.75	54.75
11/13/2007 02:30:00	55.59	55.59
11/13/2007 02:45:00	56.7	56.7
11/13/2007 03:00:00	54.21	54.21
11/13/2007 03:15:00	54.12	54.12
11/13/2007 03:30:00	42.87	42.87
11/13/2007 03:45:00	38.82	38.82
11/13/2007 04:00:00	40.11	40.11
11/13/2007 04:15:00	37.8	37.8
11/13/2007 04:30:00	39.54	39.54

You may also choose to download this data to a csv file by choosing [Download CSV](#) from the

Interval Data Results

screen. Example below.

	A	B		C	
1	Time	1040051	0001-1 (Maximum)	1040051	0001-1 (Total)
2	11/13/2007 0:00		60.27		60.27
3	11/13/2007 0:15		57.3		57.3
4	11/13/2007 0:30		56.01		56.01
5	11/13/2007 0:45		57.21		57.21
6	11/13/2007 1:00		54.72		54.72
7	11/13/2007 1:15		55.26		55.26
8	11/13/2007 1:30		55.11		55.11
9	11/13/2007 1:45		55.41		55.41
10	11/13/2007 2:00		57.24		57.24
11	11/13/2007 2:15		54.75		54.75
12	11/13/2007 2:30		55.59		55.59
13	11/13/2007 2:45		56.7		56.7
14	11/13/2007 3:00		54.21		54.21
15	11/13/2007 3:15		54.12		54.12

If you have any questions or issues using LODESTAR, please contact us at [DataViewer](#).